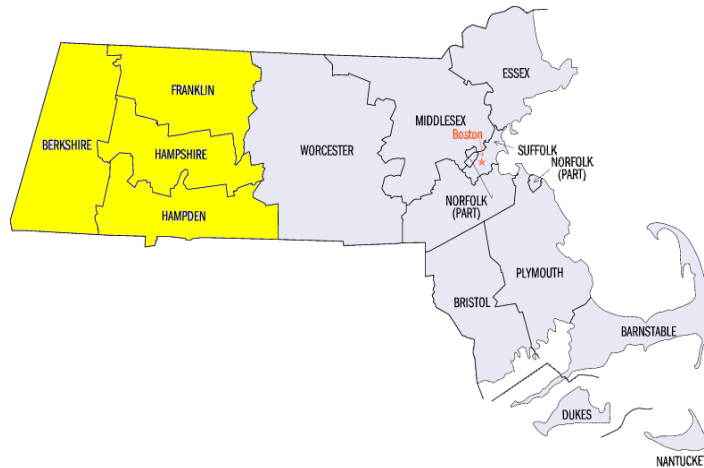




## Mass Mentoring Counts 2008 Regional Supplement: Western Massachusetts



In order to learn more about the program characteristics of youth mentoring programs operating in Massachusetts, Mass Mentoring Partnership and staff from the UMass Donahue Institute worked together to develop a web survey to be completed by all formal youth mentoring programs in the state. The *Mass Mentoring Counts 2008* survey was designed to gather data about general program characteristics as well as information on who the program serves.

MMP's Youth Mentoring Program Database served as the primary resource for needed program and key contact information. In addition, MMP staff conducted extensive outreach efforts to the field prior to survey distribution. Outreach efforts included calls to the field to update and identify new mentoring programs and correct contact information as well as marketing and promotion efforts through MMP E-Bulletins and relevant workshops and trainings. As a result, *Mass Mentoring Counts 2008* provides information on 135 youth mentoring programs across Massachusetts.

Twenty of the programs participating in *Mass Mentoring Counts 2008* are located in Western Massachusetts, representing 14.8% of the total. This supplemental report provides the *Mass Mentoring Counts* survey results for these specific Western Massachusetts programs. Key details about mentoring programs in Western Mass are noted, as well as noteworthy differences between the regional and statewide findings.

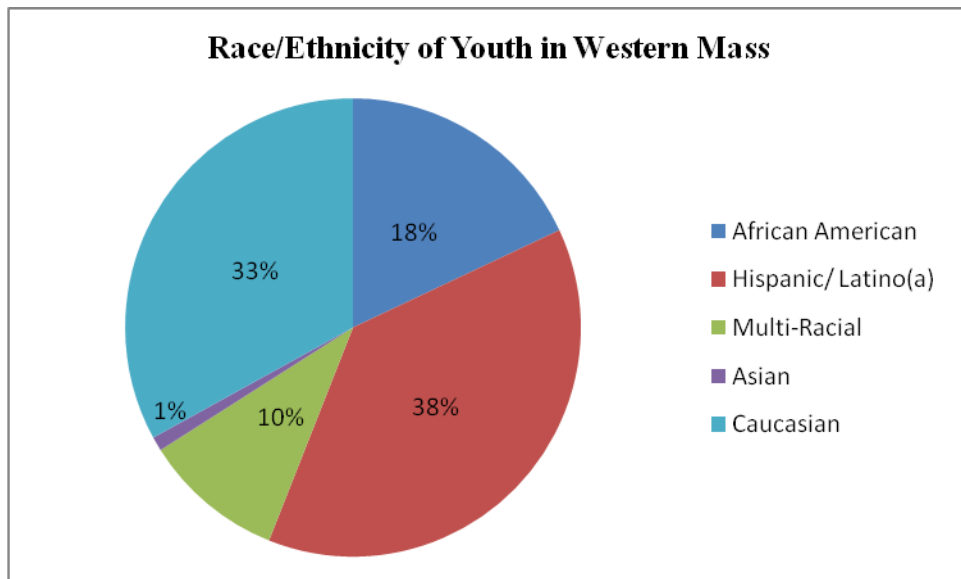
### Snapshot of Formal Youth Mentoring Programs in Western Mass

- **There is a wide diversity in the number of years the mentoring programs have been in operation.** Of the nineteen programs who reported,
  - Three programs (16%) reported being in existence for less than 2 years
  - Eight programs (42%) reported being in existence for 2-10 years
  - Eight programs (42%) reported being in existence for 10 or more years

- **The majority (60%) of the youth mentoring programs are site-based**, with youth–mentor meetings taking place at a designated location rather than in the community at-large. 73% of these site-based programs take place in the mentee’s school or an agency /community center. **Eight (40%) programs reflect the community-based model**, with youth and their adult mentors planning their activities on an individualized basis and holding meetings at varied locations in the community.
- **548 mentees (40%) in Western Mass participated in community-based programs, while 817 (60%) mentees participated in site-based programs.**
- **One-to-one matches of a young person with an adult comprise the largest segment of mentoring program models (80%).** Four programs report using other models such as team and cross-age peer mentoring.
- **Twelve out of the fifteen programs reported on organizational structure; of those reporting, 60% are a component of a larger organization.**
- The **primary goals** of youth mentoring programs located in Western Mass include:
  - Academic support (50%)
  - Self-esteem (35%)
  - Social-competence (5%)
  - Job Skills/Work Readiness/Career Exploration (5%)
  - Substance Abuse Prevention (5%)

## Snapshot of Youth Served in Western Mass

- **Youth Served in Preceding 12 Months** – At a minimum, based on programs participating in *Mass Mentoring Counts 2008*, this region served 1,365 youth, ages 4–24, in formal mentoring relationships.
- **Age and Gender** – Based on the eighteen programs that reported these demographics, 58% of mentees are female and 42% are male. **Age** breakdown of youth is as follows: ages 4–9 (22%), **10–14 (58%)**, 15–19 (20%), 20-24 (0%).
- **Race / Ethnicity** – Across the state, youth of color are more likely to be engaged in mentoring relationships. In Western Mass, sixteen programs reported the race/ethnicity of their mentees. Of the 1,138 youth for whom this data was reported, approximately 18% are African American, 38% are Hispanic / Latino(a), 10% are multi-racial (two or more races), 1% Asian, and 33% are Caucasian. Collectively, youth of color comprise 67% of the mentees served in these sixteen programs.



- **Target Populations** – Respondents were asked whether their program serves substantial proportions (25% or higher) of specific youth subgroups. Mentoring programs most frequently target and serve youth having academic difficulties, youth from low-income families, and youth from single parent families, all circumstances correlated with at-risk factors for youth.
  - 18 out of the 20 programs surveyed serve a substantial portion of **low-income** youth (90%)
  - 17 out of the 20 programs surveyed serve a substantial portion of youth **academically at risk** (85%)
  - 16 out of the 20 programs surveyed serve a substantial portion of youth in **single parent households** (80%)

**Snapshot of the Adults Serving as Mentors in Western Mass**

- **Mentors Serving in Preceding 12 Months**– Of the sixteen programs who responded, a minimum of 1,031 individuals ages 14 and older served as mentors in formal mentoring programs.
- **Age and Gender** –Of the programs reporting data on mentors, 65% of mentors are female and 35 % are male. The mentors’ age breakdowns for these programs are as follows: 14-17 (21%) 18–22 (33%), 23–35 (16%), 36–49 (14%), 50–64 (15%), and 65 years or more (1%).
- **Race/Ethnicity** – Approximately 70 % of adults serving as mentors in Western Mass are Caucasian. In addition, 12% are Black / African American, 12% are Hispanic / Latino (a), 4% are Asian, and 2% reported Multi-racial (two or more races).
- **Length of Match Commitment**- Fifteen out of nineteen programs reported encouraging their matches to meet beyond the expected length of match duration. Six of the fifteen reported 50-74% of their matches extended beyond the designated term, while an additional four programs reported 74%+ extended beyond the designated term.
- **Early Match Termination**- Eighteen out of twenty programs reported on the percentage of matches that ended before the designated term. Of these, six programs (33%) reported having less than 10% of their matches ending prematurely. Five programs (28%) reported 10-19% of their matches ending prematurely and six (33%) reported 20-29% of matches ending early. One program reported 30% + of their matches terminating prematurely

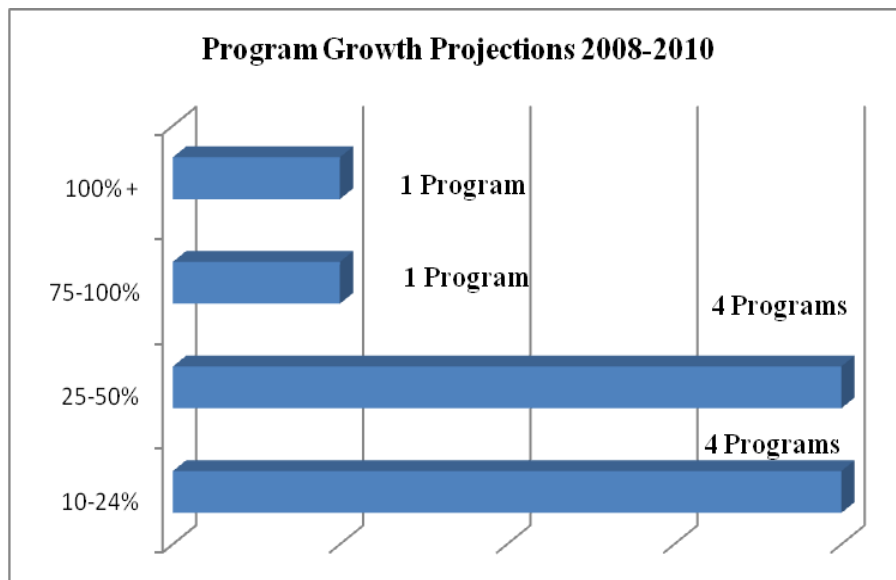
## Youth on Waiting Lists for Mentors in Western Mass

Twenty-two % of youth on waiting lists across the state are located in Western Mass.

- **Based on data from seventeen programs, 674 youth are on waiting lists.**<sup>1</sup>
  - 7 programs reported having no waiting list (55%)
  - 4 programs reported having less than 50 youth on their waiting list (36%)
  - 1 program reported having more than 50 youth on their waiting list (9%)
- **Gender** 37% on waiting lists are females and 63 % are males.
- **Age** The ages of youth on waiting lists are as follows: 30% are ages 4-9 yrs., 50% are ages 10-14 yrs., and 20% are ages 15-19.

## Growth of Youth Mentoring Forecasted for Western Mass

- **Of the ten programs** who forecasted program growth over the next two years
  - Four programs projected growth between 10-24%
  - Four programs projected growth between 25-50%
  - One program projected growth between 75-100%
  - One program projected growth higher than 100%



<sup>1</sup> Staff were asked to provide the number of youth currently on their programs' waiting list. The survey stated "If your program does not have a waiting list, please enter "0". Consequently, the data does not differentiate between those programs that do not maintain a waiting list (i.e., not applicable) and those that currently have zero youth on their waiting list.

## 2006 -2008 Comparison: In Brief

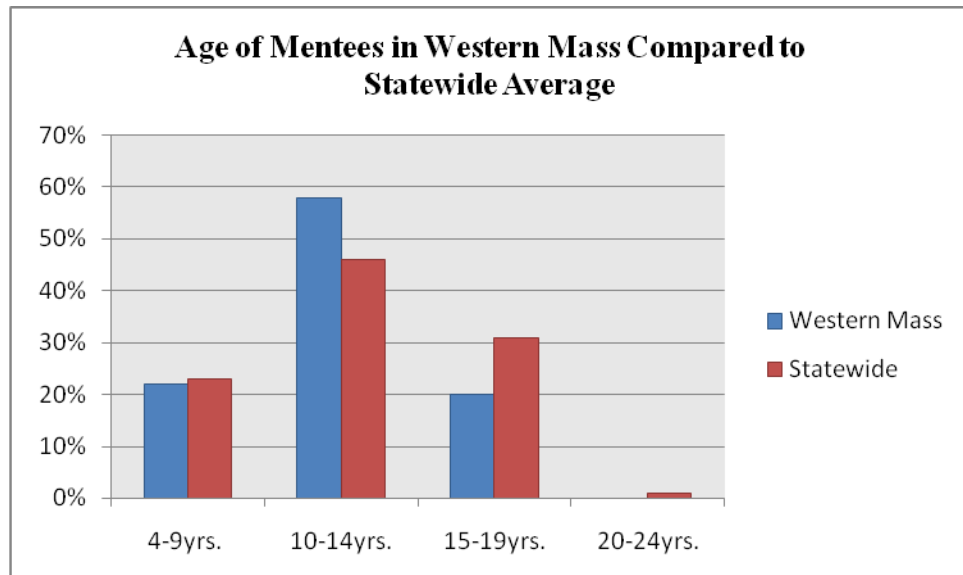
- **Eight agencies, representing eleven programs, in Western Mass provided data for *Mass Mentoring Counts* in 2006 and 2008.** Of these *eleven* programs, four increased their annual youth served, while five experienced a decrease in the amount of youth served and two remained stable.
- Mentoring programs reported an **additional 594 youth** in formal mentoring relationships in *Mass Mentoring Counts 2008*. This represents a **77% increase in the number of youth reported in formal mentoring relationships between 2006 and 2008.**
- Further analysis was conducted on the four programs that reported annual youth-served counts in both the 2006 and 2008 *Mass Mentoring Counts* surveys. An **additional 57 youth** were served in 2008 by these four programs. This represents a 7% increase in youth served by these four programs.

## Programs That Reported in the Region

ACTS: Action Centered Tutoring Services	
Big Brothers Big Sisters of Berkshire County	
Big Brothers Big Sisters of Franklin County	<ul style="list-style-type: none"> <li>▪ Community Based</li> <li>▪ Site Based</li> </ul>
Big Brothers Big Sisters of Hampden County	<ul style="list-style-type: none"> <li>▪ SMART</li> <li>▪ Community Based Program</li> <li>▪ Lunch Buddies</li> <li>▪ High School Mentoring Program</li> </ul>
Big Brothers Big Sisters of Hampshire County	<ul style="list-style-type: none"> <li>▪ Community Based</li> <li>▪ Site Based</li> </ul>
Boys & Girls Club of Chicopee	Shannon CSI
Boys & Girls Club of Greater Holyoke	
Friends of Children	Adolescent Advocacy Mentoring Project
Girls Incorporated of Holyoke	Mentors and Teens Connecting in Holyoke (MATCH)
New England Farm Workers Council	(NEFWC) Student-Based Mentoring Program
Railroad Street Youth Project	South Berkshire Mentoring Program
Springfield College	Partners Program
Springfield School Volunteers	SSV School-Based Mentoring Program
Student Bridges at UMass Amherst	Student Bridges

## Statewide Comparisons

- **Sixty percent of youth mentoring programs in Western Mass** are a component of a larger organization, lower than the state average of approximately 80%, indicating there are more stand-alone mentoring programs in Western Mass than in other regions across the state.
- **Statewide, 48% of participants are in site-based programs, compared to 60% of youth in Western Mass.**
- **Of the eighteen programs that reported the gender of their youth, 58% are female and 42% are male.** In the Western Mass there is a larger gap between male and female mentees than the rest of the state. Statewide, male and female mentees are evenly distributed, with 51% of youth being female and 49% male.
- **Statewide, 4-14yr. old mentees make up 68% of the youth served population,** whereas in Western Mass 4-14 yr. old youth make up 80% of the population. In contrast, Western Mass serves a lower percentage of 15-19 yr. (20%) old mentees than the state average which is 31%.



- Of the youth of color in mentoring relationships, mentoring program in Western Mass serve a higher proportion of Hispanic/Latino (a) youth. **Statewide, Hispanic/Latino (a) youth comprise 27% of mentees, compared to 38% in Western Mass.**

- **Mentors in Western Mass are significantly younger than mentors statewide.** Across the state, the percentage of mentors over the age of 23 yr. is 72% compared to only 46% in Western Mass. Statewide, the percentage of 14-17 yr. old mentors is 3%, whereas teenage mentors in Western Mass comprise 21% of the population. This indicates a higher percentage of youth engaged in cross-age peer mentoring in Western Mass than in other regions.

